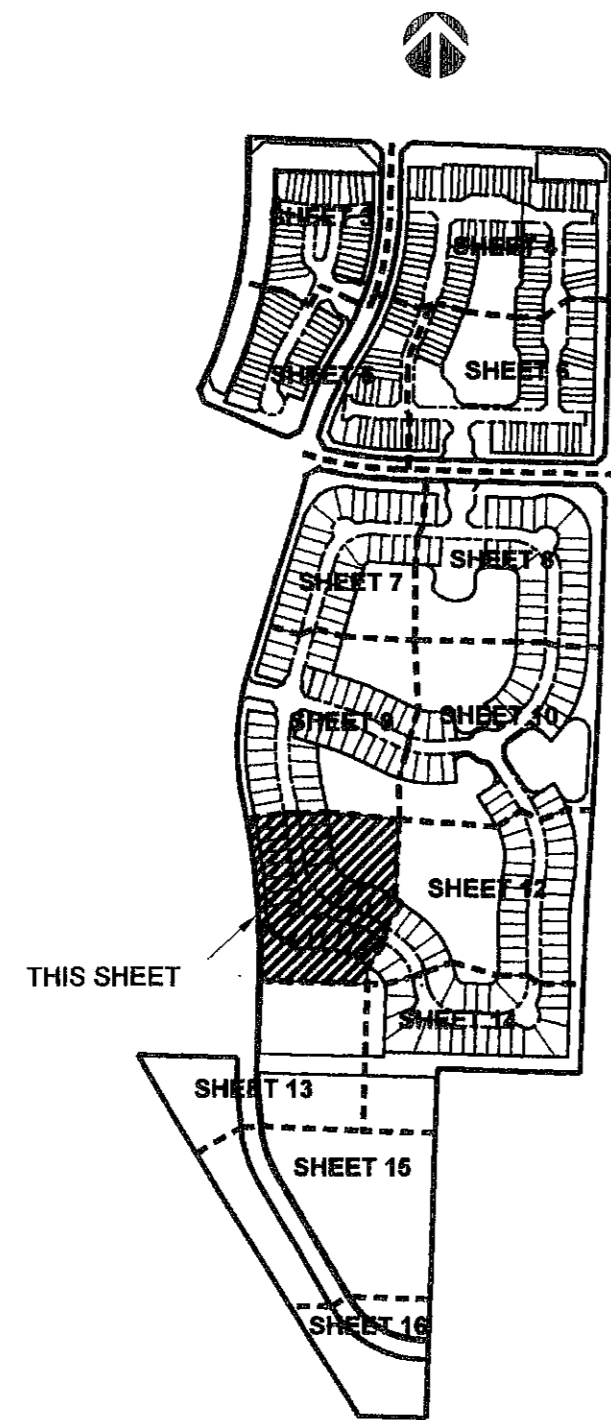
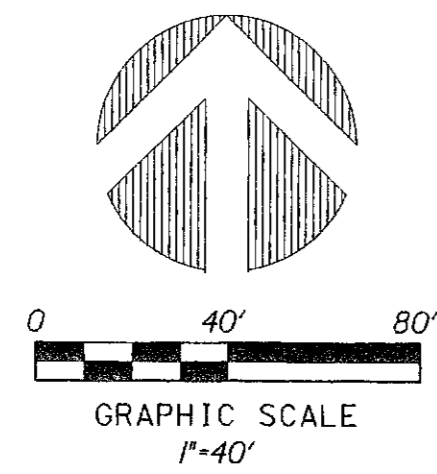


**PERIMETER**  
**SURVEYING & MAPPING**  
 Certificate of Authorization No. LB7264  
 Prepared by: Jeff S. Hodapp, P.S.M.  
 951 Broken Sound Parkway, Suite 320  
 Boca Raton, Florida 33487  
 Tel: (561) 241-9988  
 Fax: (561) 241-5182



**KEY MAP**  
(NOT TO SCALE)

**LEGEND:**

- ⊙ SET P.R.M. (UNLESS OTHERWISE NOTED) - 4" X 4" CONC. MON. WITH ALUMINUM DISK STAMPED P.R.M. • LB7264
- ⊙ SET P.C.P. • LB7264
- ⊙ CENTERLINE

**ABBREVIATIONS:**

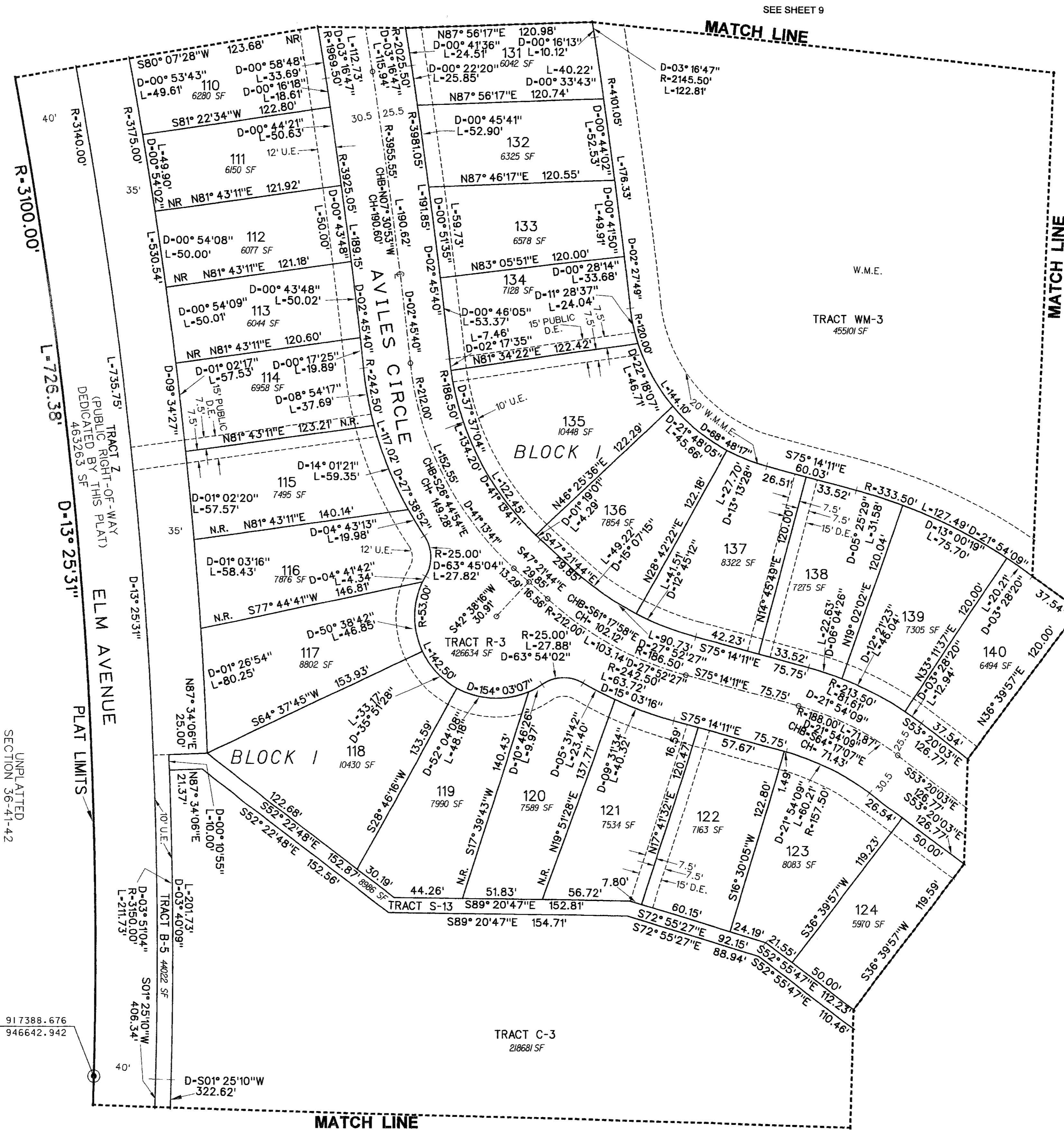
- CH CHORD BEARING
- CHB CHORD BEARING
- CONC. CONCRETE
- COR. CORNER
- D DELTA (CENTRAL ANGLE)
- D.E. DRAINAGE EASEMENT
- L ARCLength
- L.B. LICENSED BUSINESS
- L.E. LANDSCAPE EASEMENT
- L.S. LICENSED SURVEYOR
- L.S.E. LICENSED SURVEYOR
- LIFT STATION EASEMENT
- MON. MONUMENT
- O.R.B. OFFICIAL RECORDS BOOK
- N.P.B.C.T.D. NORTHERN PALM BEACH COUNTY IMPROVEMENT DISTRICT
- N.R. NON-RADIAL
- P.A.E. PEDESTRIAN ACCESS EASEMENT
- P.B. PLAT BOOK
- P.B.C.R. PALM BEACH COUNTY RECORDS
- P.G. PAGE
- P.C.P. PERMANENT CONTROL POINT
- P.O.B. POINT OF BEGINNING
- P.O.C. POINT OF COMMENCEMENT
- P.R.M. PERMANENT REFERENCE MONUMENT
- P.S.M. PROFESSIONAL SURVEYOR & MAPPER
- P.U.D. PLANNED UNIT DEVELOPMENT
- R. RADIUS
- R.E.E. ROOF ENCROACHMENT EASEMENT
- R/W. RIGHT-OF-WAY
- S.E. SIDEWALK EASEMENT
- SEC. SECTION
- S.F. SQUARE FEET
- S.L.E. SEWER LINE EASEMENT
- U.E. UTILITY EASEMENT
- W.L. WATER LINE EASEMENT
- W.M.E. WATER MANAGEMENT EASEMENT
- WMME WATER MANAGEMENT
- WMAE WATER MANAGEMENT ACCESS EASEMENT

# PALOMA, P.U.D.

A PORTION OF THE WEST ONE-HALF OF SECTION 36, TOWNSHIP 41 SOUTH,  
 RANGE 42 EAST, AND A PORTION OF THE NORTHWEST ONE-QUARTER OF  
 SECTION 1, TOWNSHIP 42 SOUTH, RANGE 42 EAST, PALM BEACH GARDENS,  
 PALM BEACH COUNTY, FLORIDA.  
 JULY, 2006

154

SHEET 11 OF 16



UNPLATTED SECTION 36-41-42

N 917388.676  
E 946642.942

SEE SHEET 9

SEE SHEET 12

MATCH LINE

SEE SHEET 13